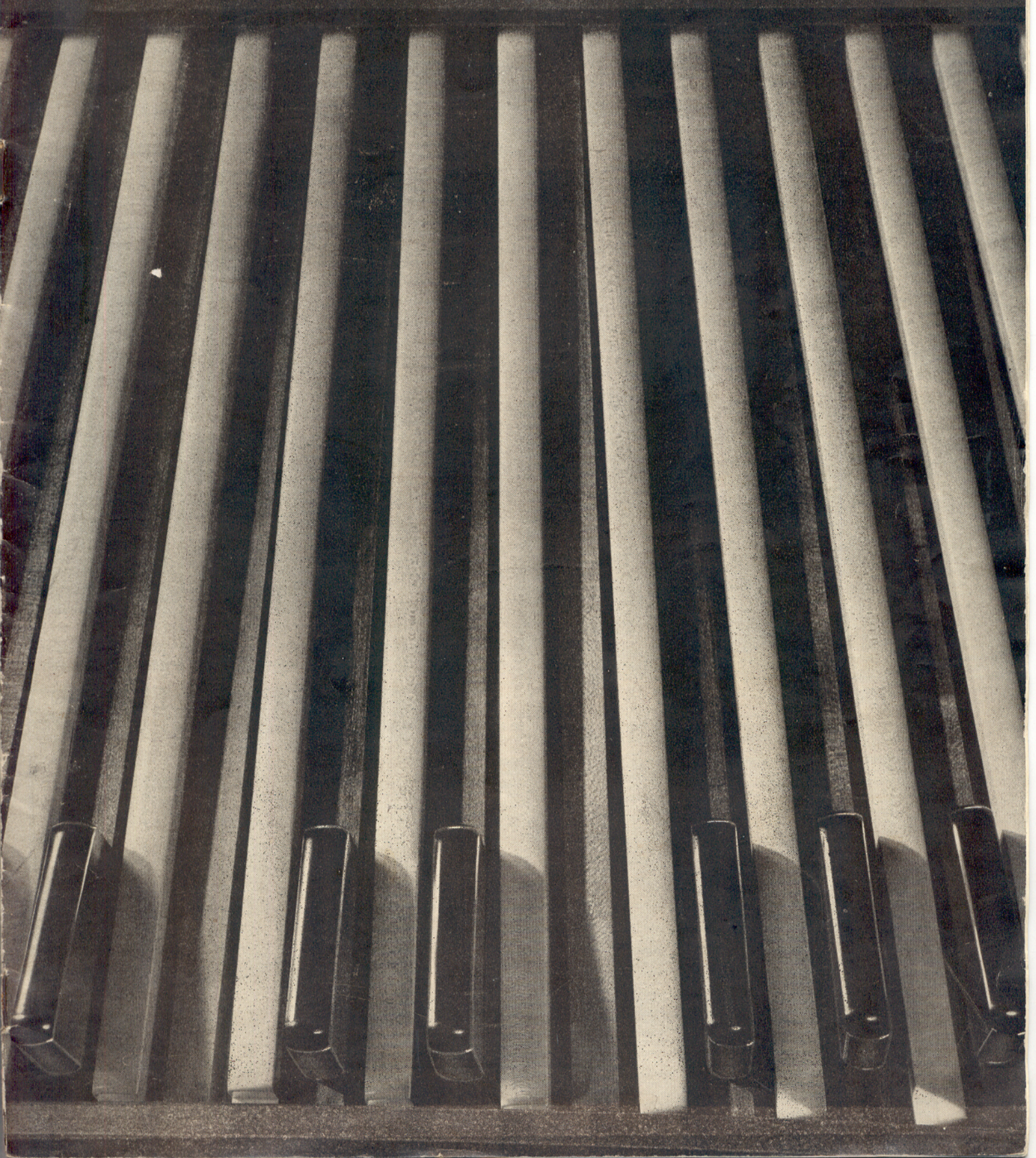
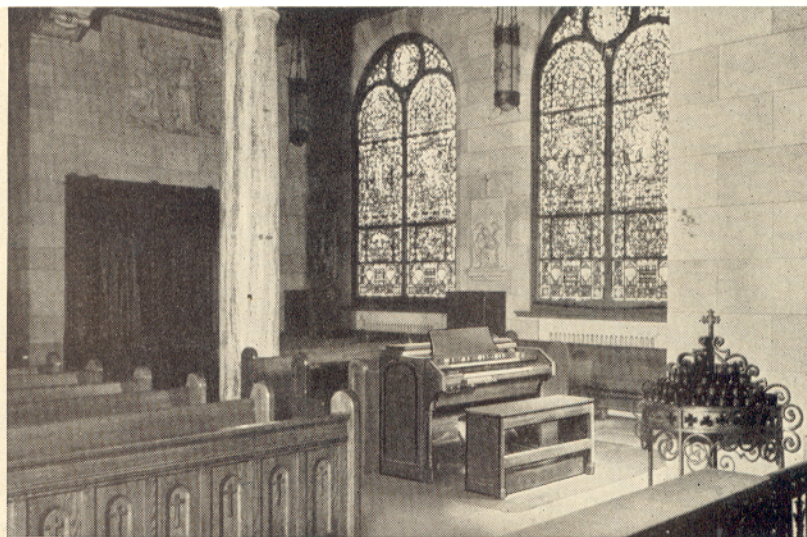


HAMMOND ORGANS

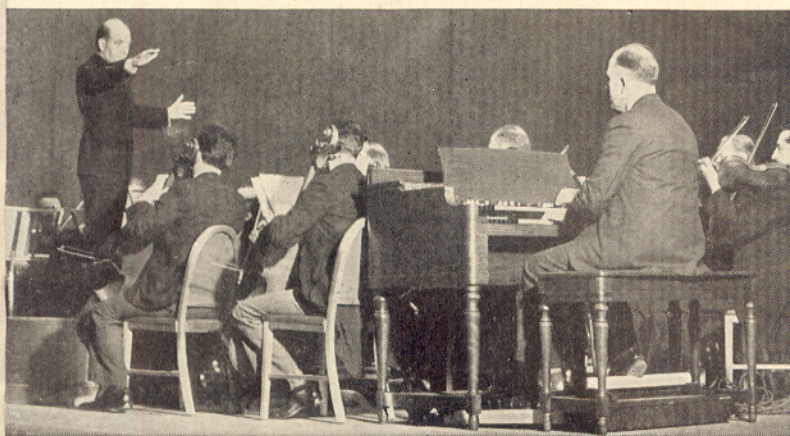




Used in great numbers of Catholic Churches, the Hammond Organ has been praised by leading authorities as ideal for all purposes of the Catholic service. Departing from usual practice, the above Hammond in the Holy Family Church, New Rochelle, N. Y., is placed in the front of the church.

That the Hammond Organ can fill the biggest requirement for church use is shown by the permanent installation in magnificent Canterbury Cathedral, England (left). Canterbury seats over 4,000 people.

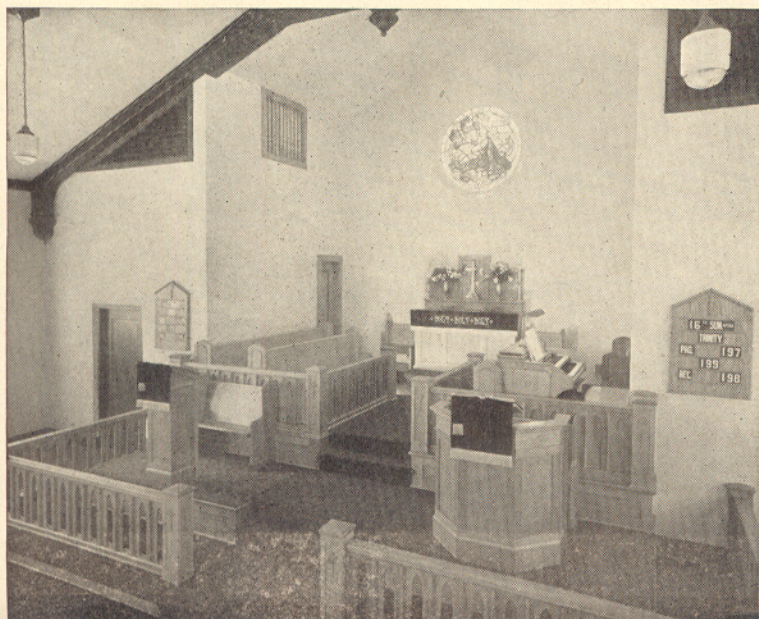
The Hammond brings the glorious, multi-voiced music of the complete organ to the smallest chapel. This Hammond (right) is in the chapel of the beautiful \$1,000,000 Charlotte Memorial Hospital, Charlotte, N. C.



The Hammond Organ has been praised by outstanding figures in the music world. Eugene Ormandy, conductor of the Philadelphia Symphony Orchestra (left), when their Hammond was installed said, "I was quite truthfully amazed at the superlative musical quality of the instrument. It will add greatly to the repertoire of the Philadelphia Orchestra."

Leading morticians find the Hammond Organ the complete answer to the need for appropriate music. The Hammond below is in the beautiful chapel of Lupton and Sons, St. Louis.

The Hammond Organ created new space and permitted beautiful remodeling of the sanctuary in the Grace Lutheran Church, Dayton, Ohio, as shown in the picture below.



THE HAMMOND ORGAN

ORGAN music is perhaps the most beloved of all music. The Hammond Organ is the culmination of an ideal—that of placing fine organ music within the reach of virtually everyone, not only the largest churches but the smallest, not only sumptuous homes but modest dwellings, wherever lovely music is desired. This the Hammond Organ does because of many features unique to this organ alone. It is compact, easily transported. It is so designed that volume manufacturing reduces costs to a minimum, and at the same time it retains the vast tonal range that is the organ's principal characteristic and appeal.

Speaking of the Hammond Organ, the eminent Dr. Walter Damrosch said: "To think that electricity can be so chained to the idea and hands of men as to reproduce an organ in all its finest and most intimate details, and what is still more, to do this in such a way that today the smallest church in America can have it!"

The success of the Hammond Organ has been phenomenal. Since its introduction in April, 1935, it has maintained outstanding world-wide leadership—the largest-selling organ in the world. Organ music no longer is a privilege of just a few. Playing the glorious music of the organ—once confined to scattered professional musicians who had instruments available—has become a life-enriching hobby for the amateur musician. Today the Hammond Organ is used in thousands of churches of every denomination, thousands more are in homes, in schools, in mortuaries and in many other places ranging from battleships to tiny chapels in far-off tropical islands.

A Superb Musical Instrument

The tremendous acceptance of the Hammond Organ has come about only because it has combined superb musical quality with amazing utility. Its beauty of tone, remarkable range and flexibility have been praised enthusiastically by the world's leading musicians. At the Hammond console all the lovely familiar voices of the organ—strings, reeds, woodwinds, diapasons—are at instant command. Its breadth of dynamic control, far more than that of other instruments, is the most effective known to music. And the response of the Hammond is instantaneous—there is no lagging of tone after a key is pressed. The fastest-moving

music, that was formerly impractical for the organ, is played easily on the Hammond.

The Magic of Electricity

Such exclusive features are possible because the Hammond actually generates its tones electrically, employing a principle of tone generation not used in any other instrument. It does not merely amplify mechanical sounds. It uses no strings, pipes, reeds or any other mechanical sounding device.

Once accomplished, the principle is simple enough. In the Hammond, the tones first are generated as electric waves, then are translated into sound waves. Visualize a small disc the size of a silver dollar, with "teeth" somewhat like a gear. The disc revolves at a constant speed so that the teeth or high spots pass a coil-wound permanent magnet, inducing a tiny electric current in the coil. If, for example, the high spots pass the magnet at the rate of 440 per second, when this current is amplified into sound it is a pure tone with a frequency of 440 vibrations per second. This is the note "middle A" on the international scale. There is a separate one of these discs or "tone wheels" for the full range from the lowest to the highest note on the Hammond Organ.

Because these tone wheels all are driven at a constant speed by a synchronous motor, the Hammond is always in tune.

The Harmonic Draw Bars

But what we have described are *fundamental* tones—whereas any complex musical tone is made up of the fundamental plus harmonics, or over- and under-tones. Here then is the amazing feature of the Hammond Organ: taking one tone as the fundamental, as many as eight other tones may be mixed with it in varying degrees of relative strength. These become the harmonics. And so variable are the many ways they may be combined that the player easily may create almost any shade of tone he desires.

This is the Hammond harmonic drawbar system, which has been heralded as the greatest contribution to music in a century. This is the reason for the Hammond's vast range of tones—dignified and churchly or sparkling and vivacious at will. With the Hammond's wealth of resources at his command, the player mixes his tone colors as the painter mixes colors on his palette.

SOME OUTSTANDING FEATURES OF THE HAMMOND ORGAN

A Complete Organ

The Hammond is a *complete* organ with a full range of lovely organ tones. Since variety of tone color is the organ's principal appeal, the Hammond assures the satisfaction only a complete organ can give. In addition to the familiar flutes, diapasons, reeds and strings the Hammond offers a profusion of instrumental voices. At will the player may select almost any shade of tone coloring he wishes through the harmonic drawbar system. This vast range of tones is built into every Hammond console and is a part of every Hammond installation without extra cost.

Never Has to Be Tuned

Because its tones are generated electrically the Hammond *can never be out of tune*. This not only means a very substantial saving in maintenance cost but is a wonderful convenience.

Great Dynamic Range

The ability to swell from a far-off murmur to a mighty surge of sound in a fraction of a second is one of the most famous features of the Hammond—a new contribution to organ music. This dynamic control gives the organist a new eloquence, makes available marvelous new effects for religious services and concert organ music. The ability to play at a whisper also is important for the home, for practicing and playing at late hours.

Instant Response

The Hammond responds instantly at the touch of a key—there is no lag. Fast-moving music, formerly often impractical for the organ, can be played without blur.

Easy to Play

The Hammond is remarkably easy to play. Organists are delighted with its variety, responsiveness and expression. Pianists learn to play it almost immediately. Even the beginner in music finds the Hammond a quicker way to make beautiful, satisfying music.

Fits in a Four-Foot Square

"A complete organ in a 4-foot square" is one of the great Hammond contributions. This has made

organ music practical in many places where it was impossible before. This feature also saves valuable space and in many instances has saved thousands of dollars in church building costs.

Easily Installed

The Hammond is ready to play wherever there is an electric outlet. It requires no structural installation or building alterations. This is one of its greatest economy features.

Easily Moved

Compact and light in weight, the Hammond can be easily moved when desired.

Not Affected by Humidity or Temperature Changes

The Hammond is always in tune and ready to play under any climatic conditions. And the exclusive use of non-corrosive metals and plastics in vital parts assures immediate, sure, long-lived performance in any climate.

Adaptability

The Hammond provides *complete* organ music for every purpose. Tone quality and variety are not sacrificed for the smallest installation. The volume needed for large installations is simply a matter of adding tone cabinets.

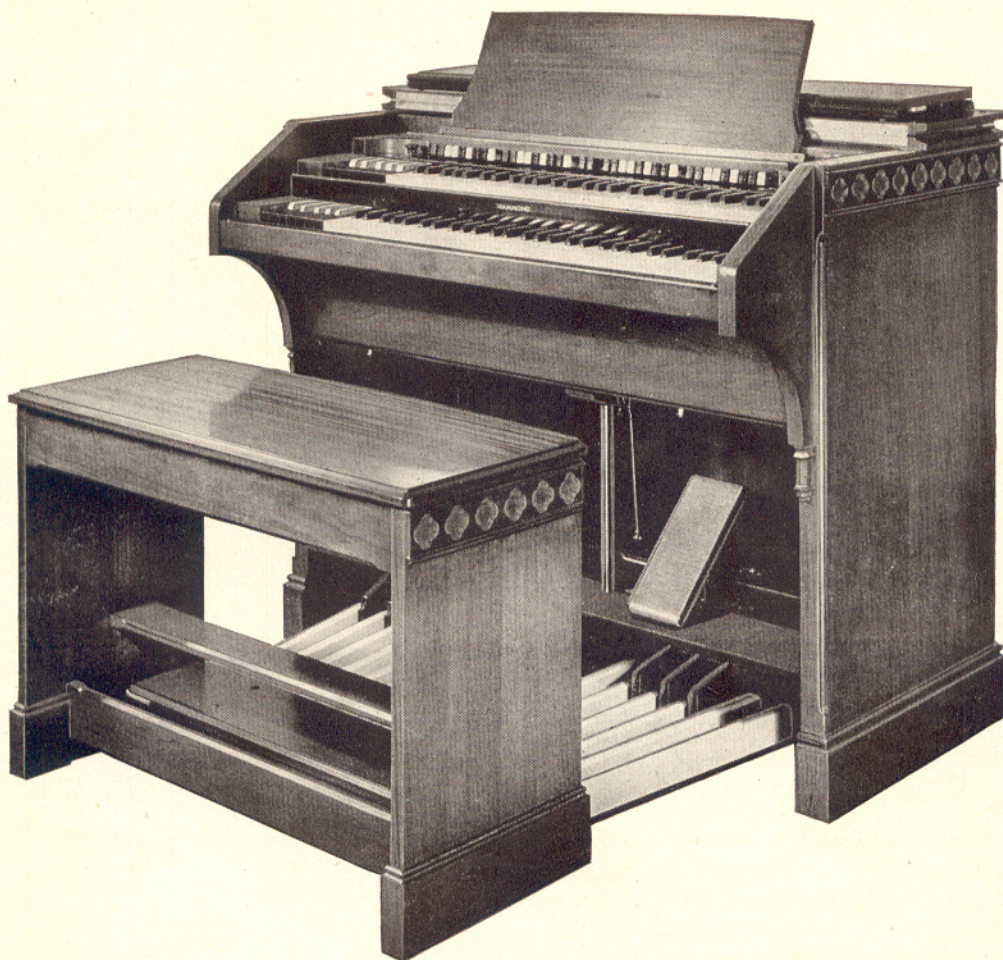
Negligible Operating and Maintenance Cost

The average installation uses about as much current as two 100-watt light bulbs—*only when it is played*. All maintenance costs average less than \$10 per year.

Sound Investment

Because it is the world's largest-selling organ, manufactured by volume production methods, the Hammond costs far less and offers a greater dollar-value than any comparable instrument. Moreover, because of its long life and huge market, it maintains its value remarkably—depreciation is at a very low rate.

CHURCH MODEL HAMMOND ORGAN



The Church Model of the Hammond Organ provides a great variety of beautiful true church organ tones of outstanding beauty. So musically excellent is this organ that, since its introduction, more churches have bought Hammond Organs than all other comparable instruments combined. Easily played by either organist or pianist, nevertheless the Hammond Organ is a *complete* organ, with two manuals and pedal keyboard, and provides whatever volume is desirable for each church from the largest to the smallest.

The Church Model of the Hammond Organ is beautiful in design, its matched walnut panels decorated with quatrefoil carving harmonizing with church interiors. It is readily installed in any church without requiring structural changes, and can be easily moved when desired; all electrical connections are detachable at the console. The Hammond Organ never gets out of tune, and maintenance and operating costs are practically negligible.

SPECIFICATIONS

DIMENSIONS:	Closed, without pedal clavier—48 $\frac{3}{4}$ " wide, 29" deep, 38 $\frac{3}{4}$ " high; Open and with pedal clavier and bench—48 $\frac{3}{4}$ " wide, 47" deep, 46" high.		
WEIGHT:	Without bench or pedal clavier—362 pounds.	EXPRESSION:	One expression pedal controlling Swell, Great and Pedals; dynamic range of 48 decibels.
MANUALS:	Swell and Great, 61 keys each.	CHURCH MODEL CV:	Equipped with Hammond Vibrato providing three degrees of true vibrato and an "off" position, together with Vibrato Chorus usable in three different degrees or "off."
PEDAL CLAVIER:	25-note, radiating, detachable with pedal light.	CHURCH MODEL DV:	With Hammond Vibrato and Vibrato Chorus as above. Also equipped with Chorus control.
TONAL CONTROLS:	9 pre-set keys and 2 sets of 9 adjustable harmonic drawbars for each manual; 2 adjustable drawbars (16' and 8') for pedals.		

ORGAN MUSIC FOR EVERY PURPOSE

SINCE the invention of the Hammond, organ music—called the most universally loved of all music—has become universally available. Wherever organ music is desired the Hammond is an admirable and practical answer. Moreover, because of its compact design and other unique features, it has made organ music practical in many places where formerly it was impossible. The Hammond Organ is used in the mightiest cathedrals and the smallest homes and apartments. It is this exceptional utility of the Hammond that has made superb, complete organ music available at such low cost.



A Complete Organ for Churches of Every Size

No church need be denied the glorious, reverent organ music which means so much to religious services. The Hammond is practical for the smallest church or chapel and provides the necessary volume for the largest. Its vast resources of rich, majestic tones leaves nothing to be desired for every part of every type of service. Its beauty always is appreciated and praised. Important, especially in chapels, is the Hammond's unique ability to play as soft as a whisper. The budget-minded church also finds many economical and convenient features: low first cost, simple installation and portability, negligible maintenance and operating expense, no tuning, saving in space and often in church building costs, no acoustical problem. Since its introduction the Hammond has been the world's largest selling church organ.



Ideal Music For the Home

Second only to its widespread use in churches, the Hammond is most popular as a musical instrument for the home. It is a distinctive and distinguishing feature for any living room, but in thousands of homes and apartments it is found to go far beyond that—it takes an important part in the enjoyment and unity of family life. Because it is so remarkably easy to play, the Hammond is ideal for the musical hobbyist. Its wealth of exquisite sustained tones makes the simplest music rich and beautiful—the beginner usually finds he can make lovely, satisfying music on the Hammond

more quickly than on any other instrument. Add to this its compact size, easy portability and charming design and you have the ideal instrument for the home.

For Schools and Colleges



An organ always has been an important requirement for schools, colleges and universities. Now the Hammond is within practical reach of every one. Second perhaps to a full orchestra, an organ provides the most satisfactory music for the auditorium. And in many other ways the Hammond plays a leading role in school activities: for social functions, to accompany glee clubs and community sings, to augment the band and orchestra, for chapel services. Moreover the Hammond is an important curricular addition to the music department. Its widespread use has so increased the demand for organists that the opportunity to study the Hammond is greatly appreciated by the students and their parents.

And in Countless Other Places

Wherever organ music is specified the Hammond Organ has won enthusiastic users. It is installed in some of the nation's largest public auditoriums, both indoor and outdoor. It is used by leading symphony orchestras. In radio and recording studios again it is virtually standard equipment. In the finest hotels and restaurants there is concert organ music for entertainment features and diners. It is used in department stores and banks. Music teachers, music schools and conservatories find it an important addition to their courses because of the increasing demand for Hammond Organ lessons. Hammonds are in hospitals, sanitariums and charitable homes. Individual professional musicians find it a profitable investment. It is used in fraternal lodges, theatres, motion picture studios—in army and navy chapels, even goes to sea aboard U. S. naval units.

Since its introduction in 1935 the Hammond Organ has found its way into fifty-seven countries of the world. Its superb musical quality, plus utility, practical design and volume manufacturing methods all have combined to make fine organ music something, not just for the privileged few, but for every one.

HOME MODEL HAMMOND ORGAN



This is the most popular model of the Hammond Organ for the home, although the Church Model is at times selected for residential use to harmonize with certain styles of furniture. The Home Model Hammond Organ is built into a console of graceful spinet design that fits well into most decorative schemes. Occupying only a four-foot square of floor space, even very moderate-size

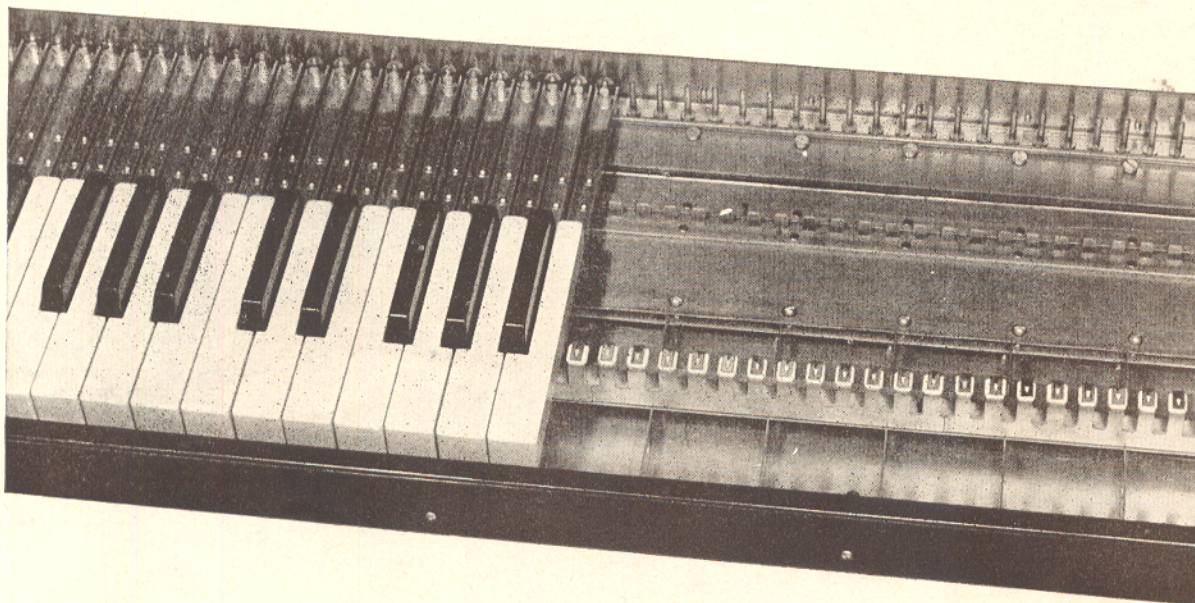
living rooms can easily accommodate it.

The vast tonal resources of this model are the same as those of the Church Model, and therefore adequate for every type of organ music. In addition to home use, this model is very popular for auditoriums, schools and colleges, and for use with orchestras. Easily moved when desired; all electrical connections are detachable at the console.

SPECIFICATIONS

DIMENSIONS:	Closed, without pedal clavier— 48 $\frac{3}{8}$ " wide, 28 $\frac{3}{4}$ " deep, 38 $\frac{3}{8}$ " high; open and with pedal clavier—48 $\frac{3}{8}$ " wide, 47" deep, 46" high.		each manual; 2 adjustable draw- bars (16' and 8') for pedals.
WEIGHT:	Without bench or pedal clavier— 345 pounds.	EXPRESSION:	One expression pedal controlling Swell, Great and Pedals; dynamic range of 48 decibels.
MANUALS:	Swell and Great, 61 keys each.	HOME MODEL BV:	Equipped with Hammond Vibrato pro- viding three degrees of true vibrato and an "off" position, together with Vibrato Chorus usable in three different degrees and "off."
PEDAL CLAVIER:	25-note, radiating, detachable.	HOME MODEL BVC:	With Hammond Vibrato and Vibrato Chorus. Also equipped with Chorus control.
TONAL CONTROLS:	9 pre-set keys and 2 sets of 9 ad- justable harmonic drawbars for		

BUILT TO LAST A LIFETIME!



The Hammond Organ is truly an innovation in mechanical design. No wooden or leather parts are used in its mechanism, no felt-shimmed bearings, no glue—thus for the first time modern precision manufacturing principles are applied to a keyboard instrument.

Above is a photograph of part of a partially assembled Hammond manual unit. The

black keys are of Bakelite and the white keys of a similar material, "Plaskon," which will not warp or change color. Keys are mounted on metal channels over a plated steel key bed.

This is typical of the construction used throughout the instrument. It is one of the reasons why your Hammond Organ is unaffected by extremes of climate or years of use.

Important Hammond Construction Features

- | | | |
|--|---|--|
| 1. Exclusive use of metal and plastics in mechanical parts. | nating burn-outs or sparking key contacts. | 8. Automatically lubricated "Compo" (porous metal) bearings in generator units. |
| 2. All key contacts of precious metals—platinum-ruthenium and palladium. | 5. Elimination of all relay or solenoid circuits. | 9. All steel parts treated to prevent corrosion. |
| 3. Instantly renewable contacts in manuals and pedals. | 6. Elimination of all variable resistors for controlling volume or tone quality. | 10. All wiring and electrical construction approved by National Board of Underwriters. |
| 4. Low potential (less than 1/1000 volt) tone-producing circuits elimi- | 7. 32 swell switch contacts—more than twice as many as used in most large organs. | |

Read what an engineer says about the way the Hammond is constructed:

"My interest in the Hammond is two-fold. As an organist, I can vouch for its musical merit and never-ending satisfaction in being always in tune. However, I have found it equally fascinating from the standpoint of construction and design.

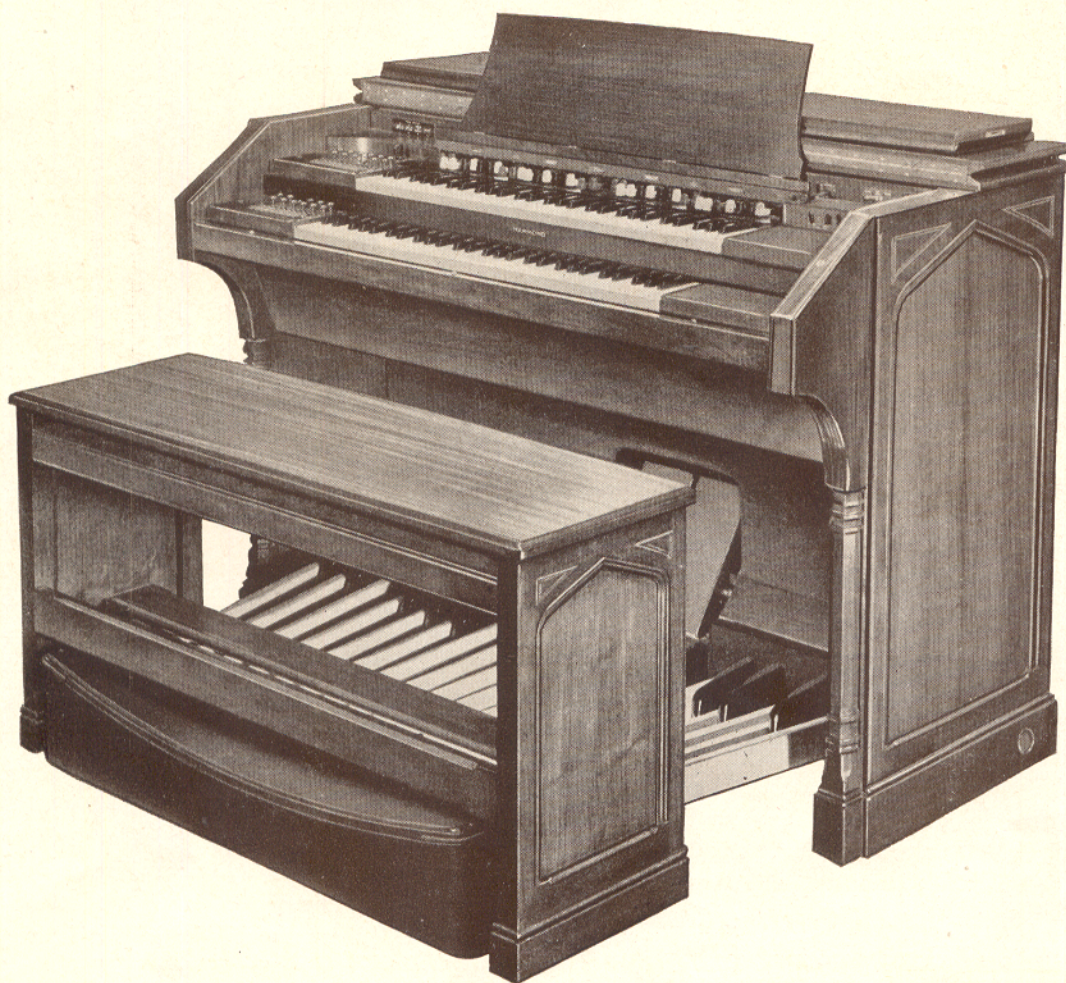
The elimination of wooden parts, usually associated with this type of instrument, and the substitution of steel and bakelite is an innovation which any engineer can appreciate. It means uniformity, also durability, in all climates. The Ham-

mond Tone Generator unit is particularly impressive. Its precision construction, rugged and well-lubricated bearings and accurate electrical regulation constitute an engineering feat and explains why your service problems have been negligible.

Allow me to congratulate you for engineering such a beautiful example of modern precision manufacturing."

Robert S. Alter, *Executive Vice President*
The American Tool Works Company

CONCERT MODEL HAMMOND ORGAN



Equipped to meet the most exacting requirements of the concert organist, the Concert Model Hammond Organ affords the utmost in tonal variety, beauty of tone, and console flexibility. The handsome walnut case is styled to harmonize with the interiors of fine churches and auditoriums.

Although wider than the Church Model and the Home Model, the Concert Model can nevertheless be carried through an ordinary doorway. Thus the organist can give recitals and concerts in any suitable place because the Concert Model can be readily moved.

SPECIFICATIONS

DIMENSIONS:	Closed, without pedal clavier—57" wide, 40" high, 29" deep; open and with pedal clavier—57" wide, 46 $\frac{7}{8}$ " high, 47 $\frac{5}{8}$ " deep.	
WEIGHT:	Without bench or pedal clavier—441 pounds.	EXPRESSION:
MANUALS:	Swell and Great, 61 keys each.	2 expression pedals, one for Swell and one for Great and Pedals. Each expression pedal has dynamic range of 48 decibels. Visual position indicators of sliding rod type.
PEDAL CLAVIER:	32-note, concave, radiating, detachable, built to AGO specifications.	CONCERT MODEL EV:
TONAL CONTROLS:	9 pre-set pistons and 2 sets of 9 adjustable harmonic drawbars for each manual; for pedals, 4 numbered and labelled toe pistons, two adjustable drawbars (16' and 8') and Great to Pedal 8' Coupler.	Equipped with Hammond Vibrato providing three degrees of true vibrato and an "off" position, each usable on either or both manuals, together with Vibrato Chorus usable in three different degrees and "off" on either or both manuals. Also equipped with Chorus control.

ORGAN MUSIC AT ITS BEST



The beautiful tones of the Hammond Organ originate in the console as tiny electric impulses, completely inaudible. These impulses are amplified and translated in the tone cabinet. The volume of music produced is determined by the number and type of tone cabinets used. Generally speaking, a home or small chapel will require only a single 20-watt cabinet; a church or auditorium seating 500-600 people should have at least the equivalent of two 40-watt cabinets, while immense auditoriums or outdoor installations will use as many cabinets as needed to produce the desired volume.

The acoustics of a room also influence the number and type of tone cabinets required. An acoustically "dead" enclosure will need a greater power output than a "live" enclosure. Tone equipment for a church or auditorium must be adequate for the occasions when it is filled with people, as a large audience can absorb as much as fifty per cent of the sound.

With the Hammond Organ, there is no expensive guesswork. Additional tone cabinets can be added at any time if more volume is desired, or taken away if less is needed. Often churches and auditoriums have regular organ chambers, which have excellent acoustical properties. In such cases B-40 cabinets can be used advantageously. Best results always are obtained when tone cabinets are placed so that the sound does not carry directly to the listener but rather by reflection from the walls and ceilings.

Reverberation Control

Organ music sounds at its best in a "live" enclosure—one with smooth, hard walls and ceiling of stone or plaster, and with a minimum of carpeting, draperies and other sound absorbent materials. Such an enclosure imparts the reverberation or echo characteristic of the finest organ music in immense cathedrals. This is exactly opposite to acoustic requirements for speech. Interiors which are finished in panels of soft, sound-absorbent materials which minimize reflection of sound are excellent for the speaker but unfavorable for organ music. For such acoustically "dead" enclosures, however, the Hammond Reverberation Control makes it possible to add to the organ music the degree of reverberation desired. This ingenious device, one of the greatest contributions to fine organ music, is exclusive with the Hammond Organ, and can be

used in any installation where acoustical conditions are not ideal for music.

The Vibrato and the Vibrato Chorus

The new Hammond Vibrato and Vibrato Chorus adds a true vibrato to the music of the organ, and has been acclaimed as the greatest advance since the introduction of the Hammond Organ itself. As every musician knows, a vibrato is a very desirable musical effect with great emotional appeal. The new Hammond Vibrato should not be confused with the tremulant devices formerly used in an attempt to create vibrato effects. Tremulants produce their effect by varying the *intensity* of the sound through mechanical means. The Hammond Vibrato creates a true vibrato, which is a frequent, regular variation in the *pitch* of any musical note—that is, the pitch wavers first slightly sharp and then slightly flat at a fast rate of speed. The resultant vibrato is extremely pleasing and beyond doubt is the most important tonal addition ever made to the Hammond Organ.

The Hammond Vibrato and Vibrato Chorus provides this beautiful new vibrato in three instantly controllable degrees—1, 2 and 3 with an "off" position between each, as well as three different degrees of vibrato chorus. Completely electrical in operation, the Hammond Vibrato responds instantly and is absolutely "true" on every note. The Vibrato and Vibrato Chorus is exclusive with the Hammond Organ and is now built into all models. In addition, this feature may be added to earlier models of the Hammond Organ.

Chorus Control

On many of the Hammond Organs manufactured before the Vibrato and Vibrato Chorus were introduced, there is a Chorus Control. This device adds a multi-voiced effect that can be used in many ways, and will be available for addition to any Hammond Organ when desired.

The Ideal Installation

The proper standard Hammond equipment will produce superb organ music under every architectural and acoustical condition. It is not our intention here to give complete directions for selecting proper equipment. Hammond dealers have made thousands of installations and through their wide experience are outstanding experts in the organ field. Your Hammond dealer readily can specify the equipment needed and its proper installation for your particular purpose.

THE ER-20 TONE CABINET



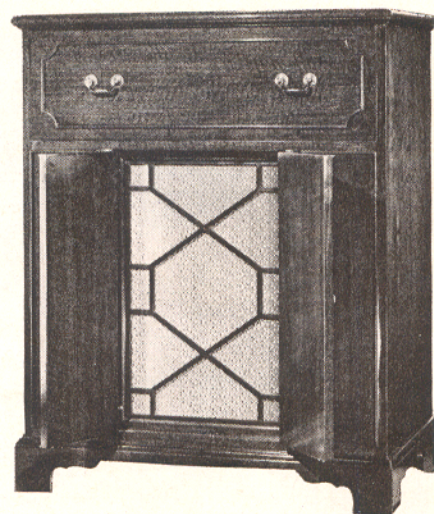
The ER-20 Tone Cabinet

DIMENSIONS—31" wide, 18" deep, 38¾" high.
WEIGHT—144 lbs.

This beautiful cabinet was designed to fit harmoniously with the finest of furnishings in homes and other decorative interiors. It is finished in handsome selected walnut panels; contains one standard 20-watt power amplifier and two 12" dynamic speaker units, complete with reverberation unit. Tones are projected from the front, so the two small doors are opened when the organ is played. The top does not raise, so this attractive cabinet can be decorated with a vase or other ornament.

The ER-20 cabinet, like all other Hammond tone cabinets, may be used singly or in groups to provide additional volume and wide distribution of sound. For example, if desired, an ER-20 may be used in the living room where it is an attractive piece of furniture, while a less decorative D-20, or any other Hammond tone cabinet, may be placed in the game room or in some other part of the house. Such additional tone cabinets may be connected direct to the ER-20 to sound whenever the organ is being played, or they may be connected through an echo switch so that either cabinet

The tones of the ER-20 tone cabinet are projected from the front, so when the organ is played the two small doors are opened, exposing an attractive grill (see picture below).

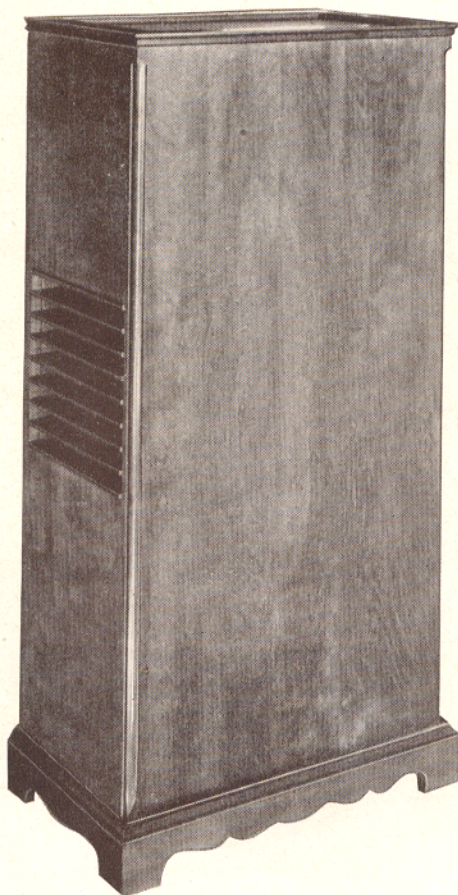


may be sounded independently of the other at the option of the player.

All ER-20 tone cabinets contain the exclusive Hammond "Reverberation Control." This device supplies electrically the reverberative effect otherwise achieved only by playing the organ in a large "live" enclosure. The amount of reverberation is adjustable over a wide range. No matter how acoustically "dead" the enclosure and regardless of its size, a Hammond Organ with Reverberation Control will provide the rich, full-toned music formerly possible only in large stone or brick buildings.

The ER-20 tone cabinet is not offered without Reverberation Control because this feature is essential in a "directional" type tone cabinet designed for use in small enclosures like living rooms which are furnished with carpets, draperies and upholstered furniture, all of which absorb sound.

THE D SERIES TONE CABINETS



The D-20 Tone Cabinet

DIMENSIONS: 28" wide, 16 $\frac{3}{4}$ " deep, 56" high.
WEIGHT: 149 pounds.

The D-20 Tone Cabinet is designed for excellent acoustical performance under the most varied of installation conditions. Tones are projected vertically toward the ceiling to give the maximum diffusion of tone; cabinet uses one standard 20-watt power amplifier and two 12" dynamic speaker units. The D-20 cabinet is finished in walnut to match the Hammond Organ console, and it can be used singly or in groups to provide as much additional volume as desired for large enclosures or out-of-doors.

An additional Hammond tone cabinet can be used as an "echo organ" in very effective fashion. When an extra tone cabinet is used in this way, the console should be ordered equipped with an "echo switch" at a small additional charge. "Echo switch" equipment can also be attached to any existing Hammond Organ not so equipped originally, this work being done by your local Hammond dealer.

THE REVERBERATION CONTROL UNIT

Reverberation Control can be added to all Hammond Organs not so equipped originally, in the form of a separate unit which can be easily attached to a wall or to the back of a tone cabinet.

The DR-20 Tone Cabinet

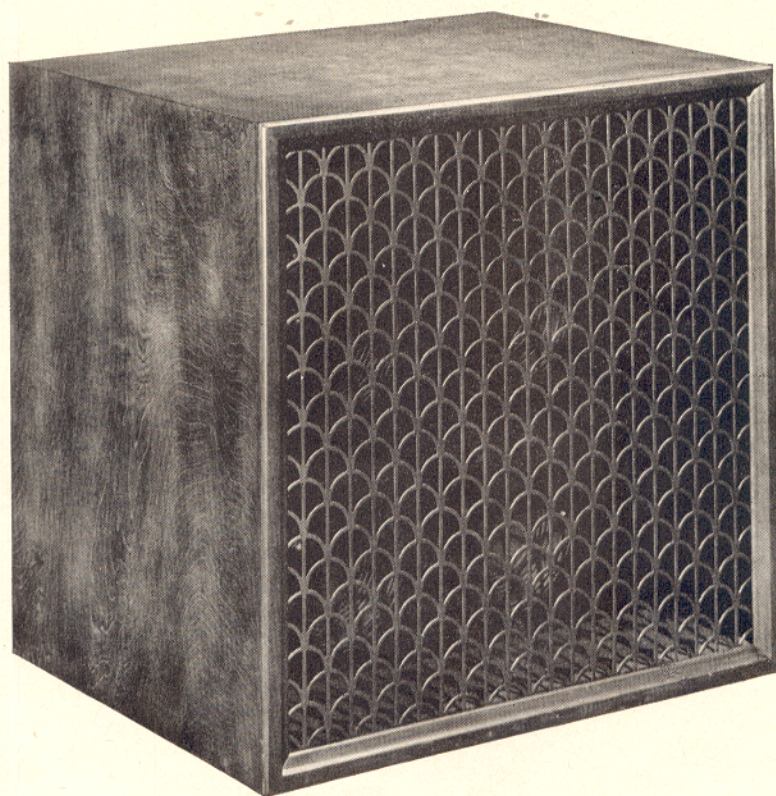
DIMENSIONS: 28" wide, 16 $\frac{3}{4}$ " deep, 56" high.
WEIGHT: 171 pounds.

Same in appearance and construction as the D-20 Tone Cabinet, but with the exclusive Hammond "Reverberation Control." Reverberation control supplies electrically the reverberative effect otherwise achieved only by playing the organ in a large "live" enclosure. The amount of reverberation is adjustable over a wide range. No matter how acoustically "dead" the enclosure and regardless of its size, a Hammond Organ with Reverberation Control will provide the rich, full-toned music formerly possibly only in the largest stone or brick enclosures.

There are some auditoriums and churches, which due to superlative acoustics, will not need to augment their natural reverberation, but in the vast majority of churches, schools, homes, or out-of-doors, the Hammond Organ with Reverberation Control provides music with a richness and grandeur far surpassing the highest expectations.

There are many Hammond Organs, particularly in small churches, homes and broadcasting studios, the tones of which would be materially enriched by the addition of the Reverberation Control unit.

THE B-40 TONE CABINET



DIMENSIONS: 36" long, 28½" deep, 36" high.
WEIGHT: 225 pounds.

This is a utility Tone Cabinet for installations requiring considerable volume. It is stoutly built of heavy plywood finished with walnut stain and varnish. A metal grille is built into the front to protect the speaker cones from accidental damage.

Unless acoustical conditions are exceptionally favorable, B-40 Tone Cabinets are usually installed in organ chambers or in connection

with a Reverberation Control unit. Many of the largest and finest Hammond installations have been made with B-40 Tone Cabinets. In power the B-40 is equal to two twenty-watt cabinets; additional volume can be obtained by using two or more B-40's.

Each B-40 Cabinet contains two 20 watt power amplifiers and four 12" dynamic speakers.

A current Hammond Instrument Company price list is enclosed with this catalogue, or this list may be obtained from your Hammond Organ dealer. The prices thereon are F.O.B. Chicago and are uniform throughout the United States, except for slight variations due to varying freight and delivery charges. In some cases, especially in large installations, additional electric wiring or other construction may be necessary. The extra charges depend on amount of wiring or construction changes necessary for complete installation. Your dealer will gladly make recommendations for equipment and submit a complete price proposal without obligation. Detailed specifications are subject to change without notice and all consoles and tone cabinets are offered subject to the manufacturer's ability to supply them.



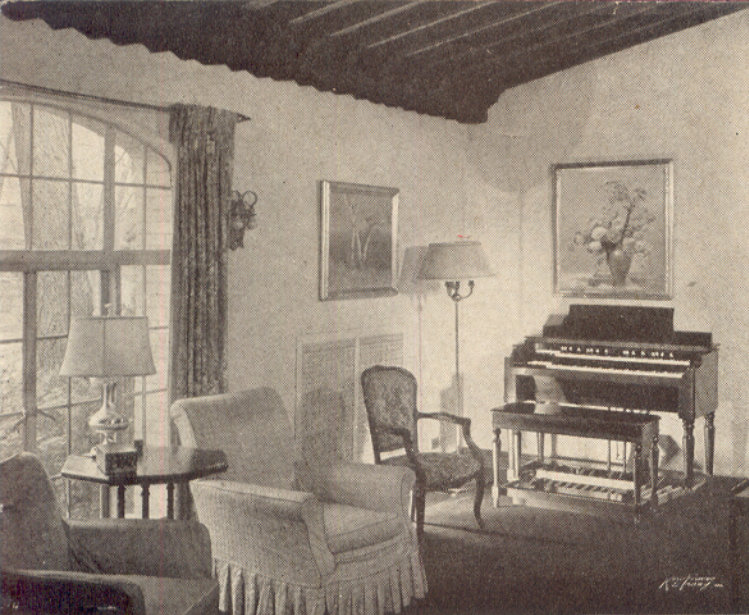
(Upper Left) Even out-of-doors, the Hammond Organ can provide the same full, rich tones that it produces in great cathedrals. Here is the annual Easter sunrise service in the vast Garden of the Gods, Colorado Springs, Colorado, which has been attended by millions of people. (Above) Memorial service at Teatro Colon, Buenos Aires, Argentina, where the Hammond Organ can fill the vast auditorium with rich organ tones.

(Left) Technical High School, Springfield, Massachusetts, one of the many schools and colleges where Hammond Organs are used for teaching and to provide music for many events of all kinds.

(Below) State Capitol of Olympia, Washington, where a Hammond Organ is played in the hundred and sixty-five foot dome of the building, believed to be the fourth highest in the world. Natural reverberation of the organ music in this dome creates musical effects of unusual beauty.



(Left) Sam Houston Coliseum, Houston, Texas, during the Feast of Christ The King. Through the use of additional tone cabinets and with the Hammond Reverberation Control, beautiful, rich organ music can be provided in any enclosure or even out-of-doors, regardless of size of space and number of people.



Because its music is so lovely and so easy to play the Hammond is an ideal musical instrument for home or apartment. Owners enjoy it as a hobby and recreation because it makes it easier to play exquisite, satisfying music. The console adds a distinguishing note to the charming simplicity of the room above.



This is one of nearly 1,000 Hammond Organ installations in U. S. Army Chapels. These are fine little steeped churches, seating 350 soldiers and equipped to serve all faiths. Hammond Organs also are used in Navy, Marine and Coast Guard chapels and on warships. Over 1,000 Hammonds are in the service, here and overseas.

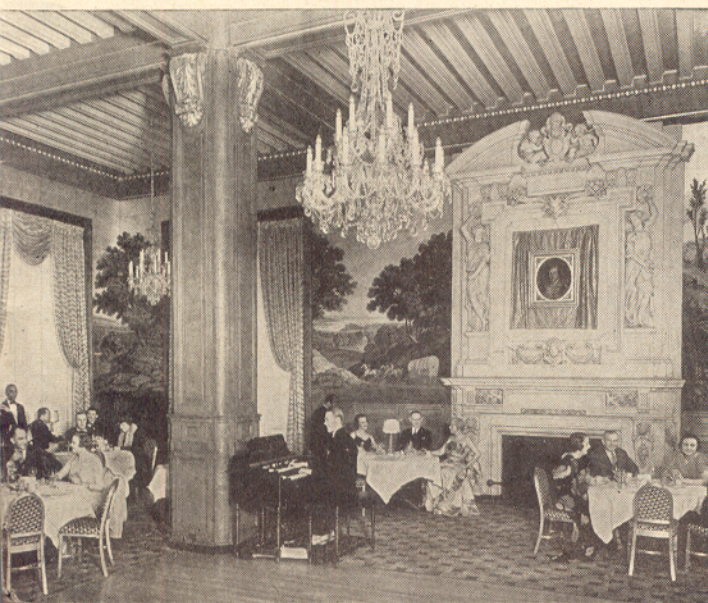


Concert organ music while dining out at fine hotels and restaurants now is not unusual. The scene below is in the Hotel Belvidere in Baltimore, Maryland.



An organ adds much to the activities and curricula of schools, colleges and universities. And now it is eminently practical because of the low-cost, portable, easy-to-play Hammond! At left, the Hempstead High School Orchestra, Hempstead, N. Y.

Music schools find a growing demand for Hammond Organ lessons. The youngsters above practice simultaneously hearing only themselves through headphones. The instructor listens to any one at will, giving tips through the microphone.



Some of the largest and finest public auditoriums are Hammond-equipped. The Hammond Organ fills with ease the magnificent War Memorial Opera House, San Francisco (below).



THE HAMMOND GUARANTEE

The Hammond Organ is guaranteed for a period of one year after date of delivery. Our liability under this guarantee is limited to replacing or repairing at our factory, or at any service station or dealer we may designate any parts proving defective in workmanship or material during such period.

We do not guarantee the vacuum tubes or speakers employed in this instrument. Such parts are standard and are covered by the guarantee of their makers.

The guarantee does not extend to the woodwork, or to any damage caused to the organ or any of its parts because of abuse, accident or improper operation.

HAMMOND INSTRUMENT COMPANY
2915 N. Western Ave., Chicago 18, Ill.